

# Ground Penetrating Radar and the Identification of Hidden Burials

By Robert Perry owner of TOPOGRAPHIX



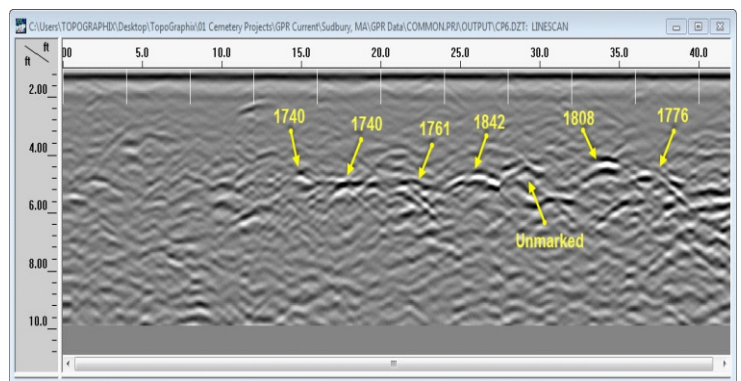
Ground Penetrating Radar (GPR) is subsurface imaging that literally looks underground to develop a picture profile of what lays below the surface. GPR is used to determine and map the location of unmarked graves, buried headstones, underground utilities as well as identifying open grave space.

Robert Perry specializes in cemetery geophysics that includes mapping, ground penetrating radar, and 3D profile imaging. He is recognized as an

expert in the field of grave detection. Mr. Perry has thousands of discoveries to his credit including two mass burial sites from the 1820's yellow fever endemic in Savannah, GA.

Mr. Perry's presentation will explain how the system works and give examples of his discoveries. For example, using ground-penetrating radar Mr. Perry was able to identify burials in Sudbury, MA oldest revolutionary cemetery that has been forgotten for centuries and located 976 unmarked grave sites as well as 244 buried headstones.

The two pictures you see below show six dated headstones from Sudbury's revolutionary cemetery. The picture on the left shows the dates on the headstones and a GPR profile image to the right show the same six burials as they appear on ground radar.



For more information on speaking engagements contact: Robert Perry at **603-429-4417**

**Email:** [bobperry@topographix.com](mailto:bobperry@topographix.com)

**Website:** [www.topographix.com](http://www.topographix.com)

**TOPOGRAPHIX LLC** Cemetery Mapping Services